

Appendix A



# Sector Led Improvement for Care and Health

Local Government Association  
Story Board for 2017/18 – 2019/20 Programme

*Community Wellbeing Board – 1 December 2016*

*SLI for Care and Health 17-18 to 19-20 StoryBoard v3.0 – CWB 1 Dec 16*

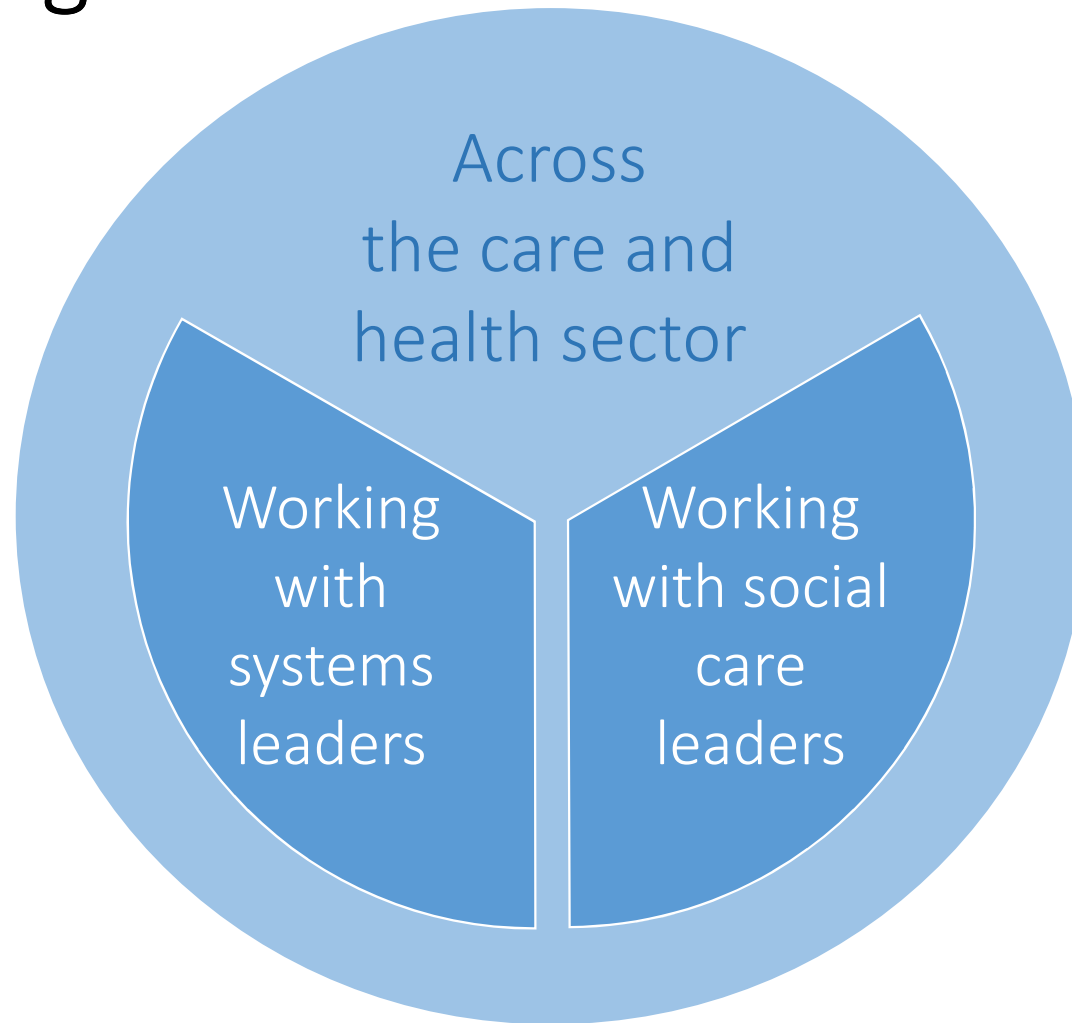
# Adult Social Care environment

- Aging population with complex needs, 85+ up by 33%
- Increasingly fragility and less resilience in all parts of the system
- Increasing financial pressures on the social care (est. £1.3bn new costs and £1.3bn demographic) that are mirrored in the NHS (£2.5bn)
- Long-term issues (commissioning, markets, workforce etc.) persist and restrict ability to change or implement policy
- Desire for BCF to accelerate the local integration of care and health services by 2020 through a focus on devolution and local solutions
- Aside from a '*Carer's Strategy*' no new major policies on horizon

# The LGA's Approach

- We have the best understanding of any national partner of local government and the ability to deliver the most effective support it requires. We have:
  - Built strong relationships with councillors, Chief Executives and DASSs
  - Delivered through a proven Sector Led Improvement approach
  - Run Member peer processes including well developed links to CCGs
  - Worked with ADASS to mobilise social care professionals and support resilience
  - Strong links and close working with NHS Confed/CC on policy and practice
  - Collected soft intelligence and insight through a network of PAs, CHIAs and regional practitioners
  - Provide bespoke support through cadre of trusted professionals

# Recognising Different Audiences



Systems leaders:  
Leaders, HWB  
Members, Portfolio  
Holders, CEOs,  
DASSs, CCG Chief  
Officers

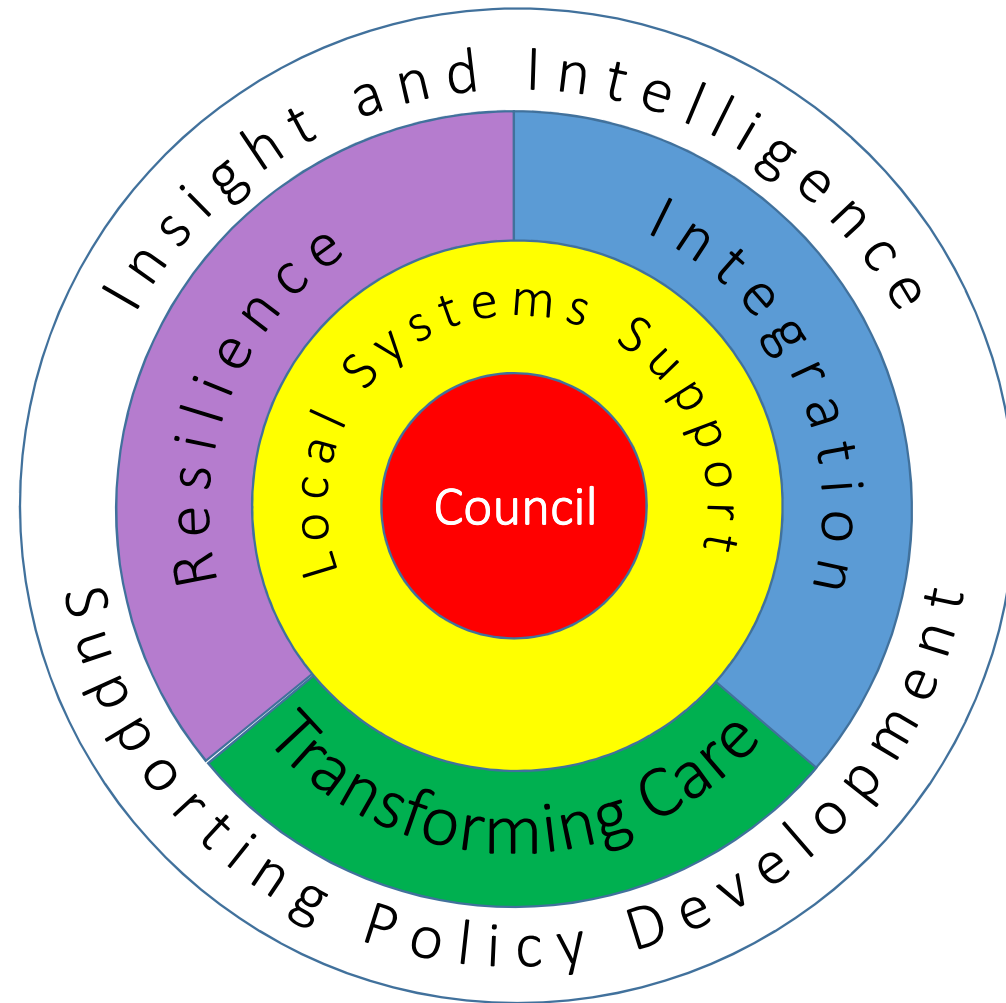
Social care leaders:  
Leaders, Portfolio  
Holders, Chief  
Execs, DASSs,  
Heads of Service

# DRAFT Programme Objective

- Using sector-led improvement to support local systems leaders to develop:
  - resilience in adult social care
  - effective care and health systems
- fulfil our role in the Transforming Care Programme

# Care and Health Sector-Led Improvement

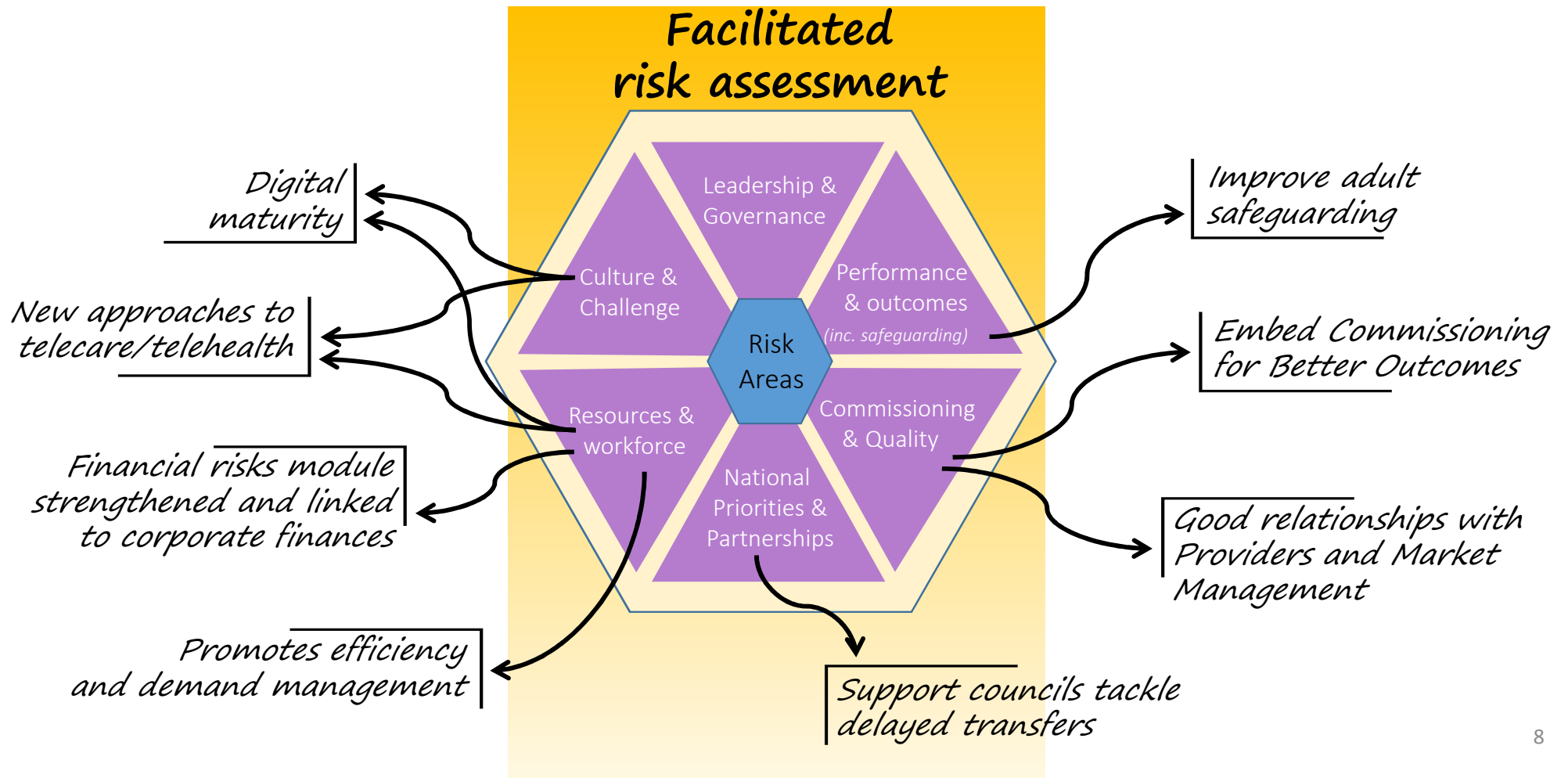
Making the case for sustainable and integrated adult social care across the care and health sector



# Local and Regional Support and Engagement

- Care and Health Improvement Advisers *(Regional and Specialist)*
  - Engagement and delivery of the programme at a regional and local level
- Regional Networks
  - Adopt, promote, develop and deliver a sector-led approach to improvement
  - Local and regional accounts
- Bespoke support to address resilience and support integration
- Good Practice, Insight and Research
  - Gather and share good practice, innovation, insight, intelligence to support improvement and policy development; Provide research and data analysis to support effective delivery; Monitor programme activity
- Bring sector experiences to influence policy development

# Resilience in adult social care

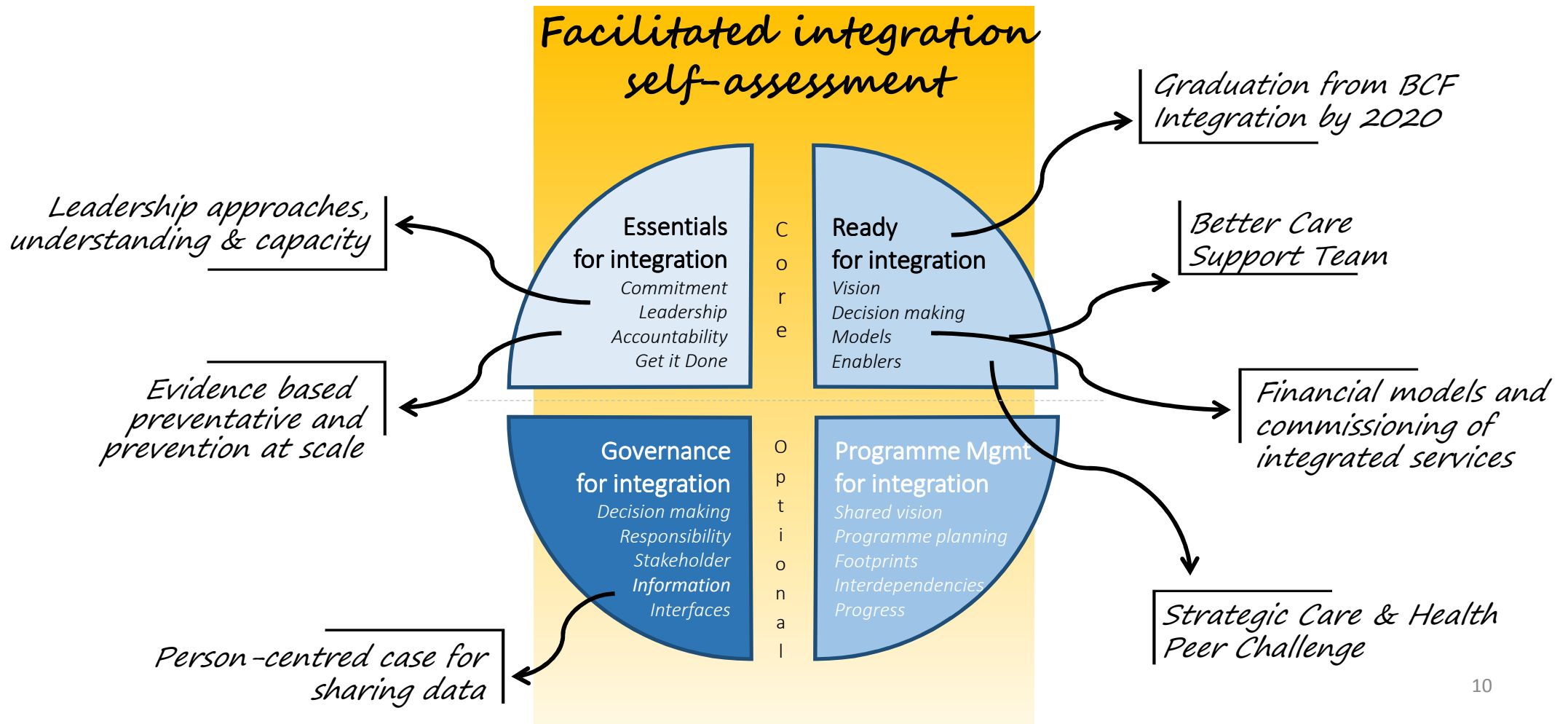




# Resilience in adult social care

- Develop the Risk Awareness Tool with strengthened social care financial risk assessment and links with corporate financial risk management
- With ECIP update the *High Impact Change Model* and drive improvements in the Delayed Transfers of Care
- Embed Commissioning for Better Outcomes and develop integrated commissioning (iCBO) with CCGs
- Promote efficiency and demand management approaches
- Promote good local relationships with providers and sound Market Position Statements
- Promote the understanding of digital maturity and the development of telecare and telehealth solutions for social care
- Support improvements in adult safeguarding

# Effective care and health systems



# Effective care and health systems

- Embed the Integration Self-Assessment Diagnostic Tool, support graduation from the Better Care Fund and integration by 2020
- Fulfil our role in the Better Care Support Team
- Assist systems leaders to build capacity, understand and develop local approaches to care and health integration, devolution and STPs
- Build understanding of the financial models for integration and approaches for commissioning of integrated services (iCBO)
- Support evidence based decisions on ROI in preventative services and prevention at scale
- Make the person-centred case for sharing data to support integration
- Review the development of the Strategic Care and Health Peer Challenge

# Transforming Care

- Fulfil our role in the *Transforming Care Programme*
- Support the empowerment of people and families with learning disabilities
- Generate approaches to transfer people with learning disabilities to more appropriate community settings
- Reinforce the development of funding flows for people with learning disabilities